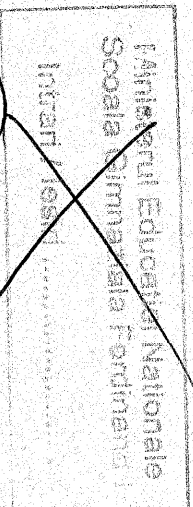


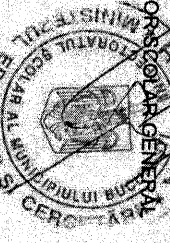
*Petru Lucaci*



BUGETUL DE STAT DETALIAT LA CHELTUIELI PE CAPITOLE LA TITLURI DE CHELTUIELI, ARTICOLE, ALINATE, PE ANUL 2021

Nr. Crt	Denumire Indicator	Cod Indicator		Total	Trimestrul I	Trimestrul II	Trimestrul III	Trimestrul IV
		Clasificatie functionala	Clasificatie economica					
1	Total Cheltuieli			4.240.332	947.806	1.402.607	908.422	981.497
2	Invatamant	65		4.240.332	947.806	1.402.607	908.422	981.497
3	TITLUL I CHELTUIELI DE PERSONAL	65	10	4.200.993	932.053	1.386.854	900.589	981.497
4	Cheltuieli salariale in bani	65	10.01	4.096.729	911.584	1.358.404	873.289	953.452
5	Salarii de baza	65	10.01.01	3.450.277	768.695	1.165.299	723.630	792.653
6	Alte sporuri	65	10.01.06	210.366	40.741	57.450	53.625	58.550
7	Fond aferent platii cu ora	65	10.01.11	289.471	58.286	85.200	68.900	77.085
8	Indemnizatii de hrana	65	10.01.17	134.238	41.955	41.955	25.164	25.164
9	Alte drepturi salariale in bani	65	10.01.30	12.377	1.907	8.500	1.970	0
10	Contributii	65	10.03	104.264	20.469	28.450	27.300	28.045
11	Contributia asiguratorie pentru munca	65	10.03.07	104.264	20.469	28.450	27.300	28.045
12	TITLU XI ALTE CHELTUIELI	65	59	39.339	15.753	15.753	7.833	0
13	Sume aferente persoanelor cu handicap neincadrate	65	59.40	39.339	15.753	15.753	7.833	0
14	Sume aferente persoanelor cu handicap incadrate	65	59.40.00	39.339	15.753	15.753	7.833	0

INSPECTORATUL SCOLAR GENERAL AL MUNICIPIULUI BUCURESTI



CONTABIL SEF

*[Signature]*

Scoala Gimnaziala Ferdinand I Bucuresti

01A

BUGETUL DE STAT DETALIAT LA CHELTUIELI PE CAPITOLE, SUBCAPITOLE, PARAGRAFE LA TITLURI DE CHELTUIELI, ARTICOLE,  
ALINIAȚE, PE ANUL 2021

Nr. Ct	Denumire Indicator	Cod Indicator		Total	Trimestrul I	Trimestrul II	Trimestrul III	Trimestrul IV
		Clasificatie functionala	Clasificatie economica					
1	Total Cheltuieli			4.240.332	947.806	1.402.607	908.422	981.497
2	Invatamant	65		4.240.332	947.806	1.402.607	908.422	981.497
3	Invatamant prescolar si primar	65.03		2.011.453	359.661	650.749	479.396	521.647
4	Invatamant primar	65.03.02		2.011.453	359.661	650.749	479.396	521.647
5	TITLUL I CHELTUIELI DE PERSONAL	65.03.02	10	2.011.453	359.661	650.749	479.396	521.647
6	Cheltuieli salariale in bani	65.03.02	10.01	1.969.488	351.746	639.399	468.196	510.147
7	Salarii de baza	65.03.02	10.01.01	1.697.783	296.254	566.499	396.030	439.000
8	Alte sporuri	65.03.02	10.01.06	108.994	19.044	29.500	29.850	30.600
9	Fond aferent platii cu ora	65.03.02	10.01.11	103.748	23.748	26.700	26.550	26.750
10	Indemnizatii de hrana	65.03.02	10.01.17	52.993	12.700	12.700	13.796	13.797
11	Alte drepturi salariale in bani	65.03.02	10.01.30	5.970	0	4.000	1.970	0
12	Contributii	65.03.02	10.03	41.965	7.915	11.350	11.200	11.500
13	Contributia asiguratorie pentru munca	65.03.02	10.03.07	41.965	7.915	11.350	11.200	11.500
14	Invatamant secundar	65.04		2.228.879	588.145	751.858	429.026	459.850
15	Invatamant secundar inferior	65.04.01		2.228.879	588.145	751.858	429.026	459.850
16	TITLUL I CHELTUIELI DE PERSONAL	65.04.01	10	2.189.540	572.392	736.105	421.193	459.850
17	Cheltuieli salariale in bani	65.04.01	10.01	2.127.241	559.838	719.005	405.093	443.305
18	Salarii de baza	65.04.01	10.01.01	1.752.494	472.441	598.800	322.600	353.653
19	Alte sporuri	65.04.01	10.01.06	101.372	21.697	27.950	33.775	27.950

Scoala Gimnaziala Ferdinand I Bucuresti - 01A



20	Fond aferent platii cu ora	65.04.01	10.01.11	185.723	34.538	58.500	42.350	50.335
21	Indemnizatii de hrana	65.04.01	10.01.17	81.245	29.255	29.255	11.368	11.367
22	Alte drepturi salariale in bani	65.04.01	10.01.30	6.407	1.907	4.500	0	0
23	Contributii	65.04.01	10.03	62.299	12.554	17.100	16.100	16.545
24	Contributia asiguratorie pentru munca	65.04.01	10.03.07	62.299	12.554	17.100	16.100	16.545
25	TITLU XI ALTE CHELTUIELI	65.04.01	59	39.339	15.753	15.753	7.833	0
26	Sume aferente persoanelor cu handicap neincadrate	65.04.01	59.40	39.339	15.753	15.753	7.833	0
27	Sume aferente persoanelor cu handicap neincadrate	65.04.01	59.40.00	39.339	15.753	15.753	7.833	0

CONTABIL SE

